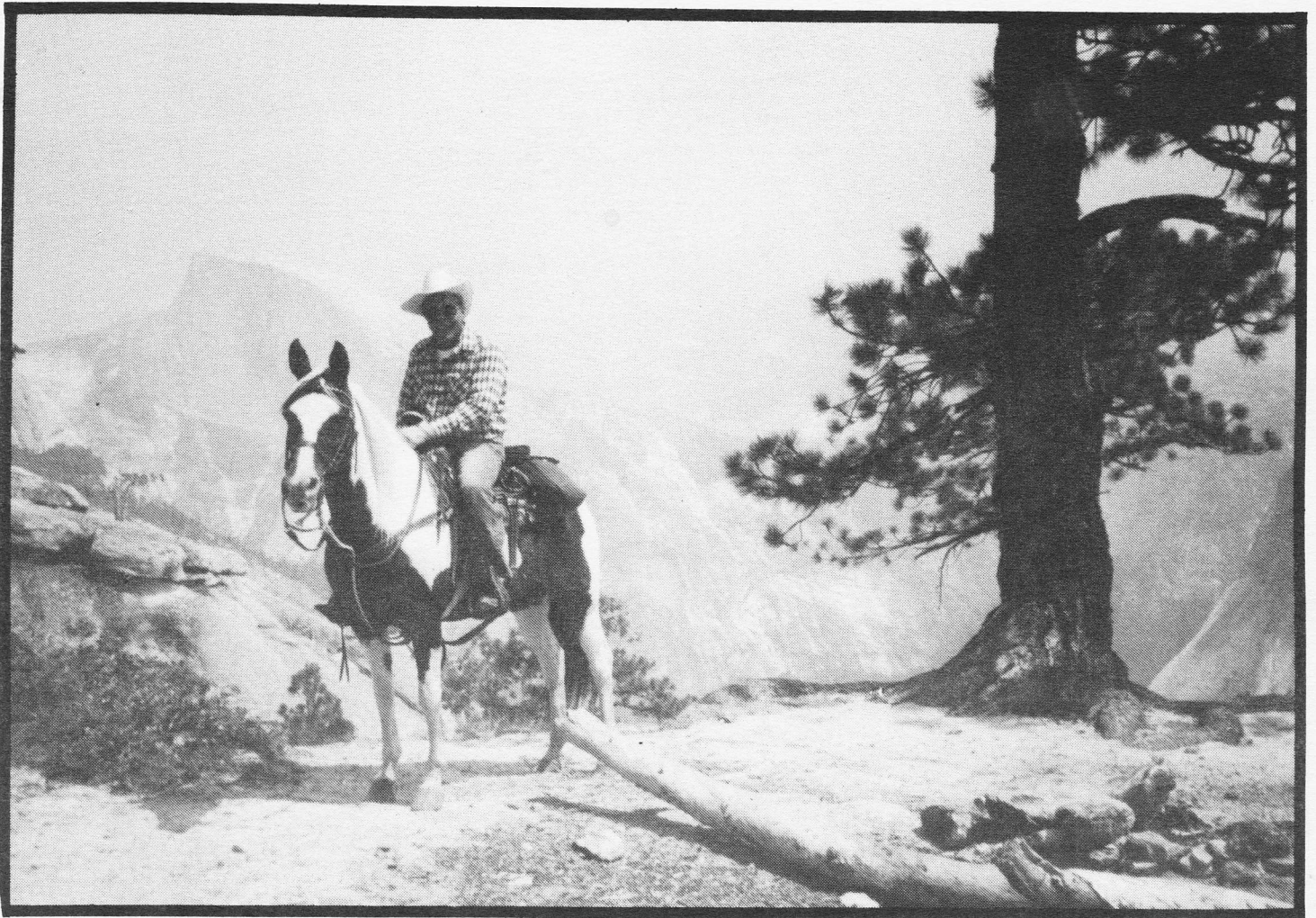


# the San Mateo **HORSEMAN**



Winter  
1989

Cover ...



ON THE COVER:  
President-Elect, Rick Payne and MIA with Half Dome in the background. Rick joined several other SMCHA members this summer on the Merced Horseman's Association's annual Yosemite ride where this picture was taken. President Ron Harris will officially pass the "gavel" to Rick at the January 14th Installation Dinner.

# MISTY RIDGE FARM

12422 SKYLINE BLVD., WOODSIDE, CA 94062

• Bobbi Petrov: 30 years experience caring for horses.

• Member of: SMCHA, Woodside Trail Club,  
California Thoroughbred Breeders Association

• Boarding starting at just \$6.00/day

• Near Purissima Open Space and Huddart Park

• Board includes both alfalfa and grain • New Arena

**CALL 415-851-3030**



# Editorial

---

SAN MATEO COUNTY  
HORSEMEN'S ASSOCIATION  
BOARD OF DIRECTORS  
AND OFFICERS 1989

PRESIDENT  
Rick Payne

FIRST VICE PRESIDENT  
Dick Convery

SECOND VICE PRESIDENT  
Libby Armanino

SECRETARY  
Doug Reed

TREASURER  
Melissa Convery

SERGEANT AT ARMS  
Walter Kirk

REGISTRAR/MEMBERSHIP  
Harry Wellman

## ONE YEAR

Ross Meredith  
Eileen Borzone  
Susan Bosse  
Dick Convery  
Melissa Convery  
Boo Hydorn  
Mary Hydorn  
Rick Payne  
Lew Reed  
Nancy Van Zwol  
Harry Wellman

## TWO YEAR

Bruce Baker  
Paul Bjoring  
Amos Dana  
Patti Dana  
Ron Harris  
Walt Kirk  
Doris Lantz  
Noel Moody  
Bill Turnbow  
Roni Turnbow  
Libby Armanino  
Doug Reed

## THREE YEAR

Christine Eppstein  
Karen Rowley  
Marv Twisselman  
John Cardinale  
Nancy Crowley  
Jill Silva  
Cheryl Fike  
Bill Hopper

With the approaching winter months, holidays, and rain (assuming that we ever get any more) many of us will find that our riding is somewhat curtailed. Although we try to encourage everyone to ride as often as possible, for those less winter-brave souls or when it's just too miserable outside, there are many things that we can do to benefit our horses. Granted, some of these are not the most pleasant tasks but it's always better to do them when you don't have to as opposed to during an emergency.

What could these be? We thought you would never ask. Many things around the barn that you may have neglected while riding heavily are good candidates. We're sure many of these will sound familiar. As we do with our homes, weatherizing our stables is just as important for our horses well-being. Checking for water stains that may have been unattended to last year, should be traced to the source of the leak and sealed. Be extra careful around power lines, even if enclosed in conduit. Water may have entered here and corroded areas not easily seen. If you have hot fence, make sure that the box is weather tight even if not directly exposed to the elements.

Tack cleaning, not a favorite pastime for many, is a good rainy day project. You can do the most often used pieces first and spread out the remainder throughout the winter. A couple of things to remember: if you need to disassemble an item and are unfamiliar with it, consider tagging the pieces as you remove them for easier reassembly. A good rule of thumb is not to use any cleaners which are of questionable nature and may come into contact with you or your horse. Also, with cleaners - don't over do it.

If you think about it, many things will come to mind and before you know it, winter will be over and the Spring Ride will be upon us. Which brings us to the fact that this is our last issue for 1988 and the next issue will include our annual event calendar. Maybe a good thing to do would be to go over last year's annual calendar, some rainy day. That way you can plan to attend those functions you missed or those you enjoyed and want to attend again. At those holiday get togethers, as talk turns to horses, try to interest your friends in the many activities. The more the merrier and 1989 looks to be a promising year.

See you on the trails,

# MESSAGE FROM THE PRESIDENT

I am very pleased to have been your President during this year of great enthusiasm, participation and support. It has been rewarding to me, and the organization has grown and become more productive, because of it. All of this success is a result of tremendous membership involvement, and a lot a hard work by the Board Of Directors and the activities Chairpersons. I thank everyone who worked or participated in the many activities, and I also thank all those who attended the activities, because without attendance, there would be no success.

Just to reflect on a few of the activities, who could forget the flying feet of our 2nd Vice President Dick Convery as we all tried to learn the Texas 10 step during the overnigher at Jack Brook Horse Camp... We can't forget when I was almost impeached during the Spring Ride in Portola Valley when I innocently led half the riders in the opposite direction of the ride leader, Rick Payne... Then there was the Safety Clinic at Spring Down Equestrian Center, when the dinner caterer's electrical power went off and we were having a panic attack, wondering when and if the food would arrive. It was only 30 minutes late, and we served a "standing room only" crowd. Great turnout... Libby Armanino was one of the big money winners at the Night at the Races at Bay Meadows. Good time was had by all, and another great turnout... While discussing great turnout, how about all the horseshows, General Meetings, Western Clinic, rides and Grand National at the Cow Palace.  
.....FANTASTIC.....

I will continue to work on the Board of Directors and support our new leaders. With the continued support and attendance of the membership, our future years will be as successful as 1988.

Again, thank to all of you for making the San Mateo County Horsemen's Association the great organization that it is!



Ron Harris  
President 1988  
S.M.C.H.A.

1980  
Palomino

## FIRST CLASS GOLD

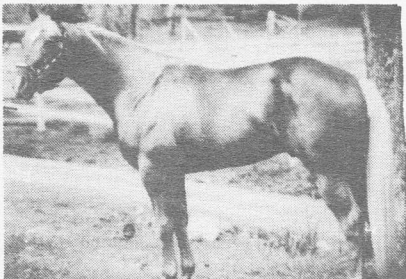
16 Hands  
1,300 Lbs.

Sire: Sir Raleigh  
Sire of:  
• AQHA Champions  
• Superior Halter Horses  
• Champion Stock Horses  
• Halter & Futurity  
Winners

Dam: Vanity Par  
Superior Halter  
ROM Performance

Fee: \$650\*

\*30 days mare care included



R HORSE RANCH  
Don and Joanne Craighead  
31101 Sherwood Road, P.O. Box 110  
Willits, CA 95490  
(707) 984-6455 or (707) 984-9984

## CHAINLINK & WOOD FENCING

SAVE!  
COMMERCIAL,  
INDUSTRIAL  
RESIDENTIAL



SAVE  
EXCLUSIVE TWO-YEAR  
WRITTEN WARRANTY

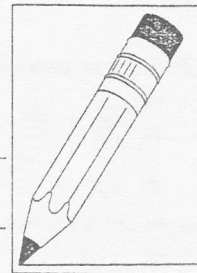
- ALL TYPES OF CHAINLINK & WOOD FENCING
- AUTOMATIC GATES
- SECURITY SYSTEMS
- ORNAMENTAL IRON
- RETAINING WALLS

- CUSTOM DECKS
- TENNIS COURTS
- MASONRY & BRICK COLUMNS
- WOOD & STEEL CORRALS
- PLAYGROUND EQUIPMENT
- FENCE & POST REPAIRS

FREE ESTIMATE - 364-7533  
3113 MIDDLEFIELD RD., REDWOOD CITY  
STATE LIC. #449355



# LETTERS TO THE EDITOR



To: SMCHA

## REWARD OFFERED FOR RETURN OF STOLEN SADDLE

I am utterly sick over losing my wonderful old Olsen-Notle saddle that I've had for 36 years. It is of enormous emotional value to me as it has been everywhere with me, including high school in Arizona in the 50's. Even though I realize that chances of recovering it are just about nil, I still want to make a decent effort at recovering it because of the emotional value. Just so your members will be extra vigilant at their respective stables: never assume someone is legitimate just because he/she appears that way! This theft was carried out in broad daylight, under the eyes of boarders who thought the gal was legitimate because she called to my horse by name and visited him in his stall. She then proceeded to the tack room and carefully chose which saddle to take!

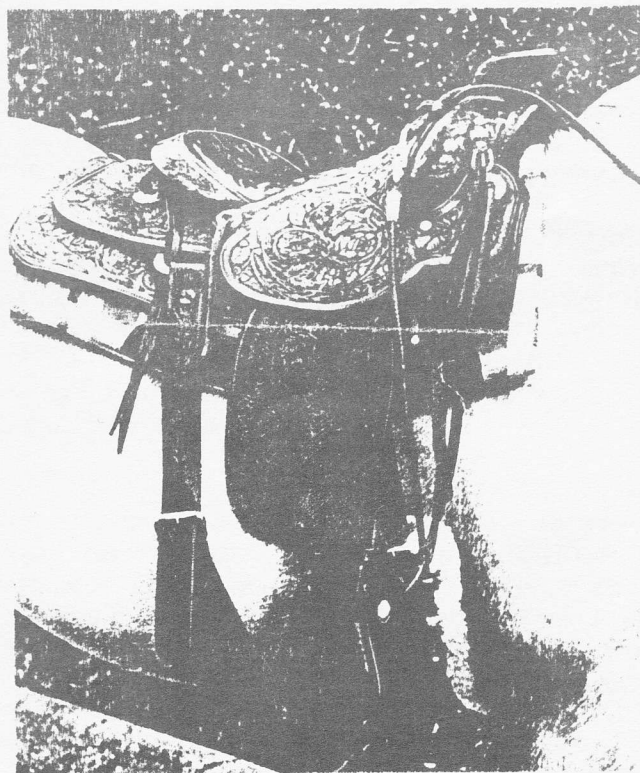
P.S. We also have a serious bicycle/horse controversy in our parks and on our trails, so your recent articles on that subject are of great interest!

### DESCRIPTION

Custom-Made Olsen-Nolte western saddle, CA 1952. Square skirts, silver horn plate with gold horsehead, silver cantle plate, scroll style, with initials "VJT", silver conchos where all strings come out, silver concho stirrup bolts, silver plate "Notle-Olsen" just behind gullet. Serial #6161, marked (most likely) under the gullet.

Saddle was stolen early afternoon 11/23/88 from Piedmont stables in Oakland. This saddle is of great sentimental value to the owner, who has had it for 36 years. Call "Val" at 415-531-4836. Please leave message. MANY THANKS!

Rear cinch was not on saddle when stolen.

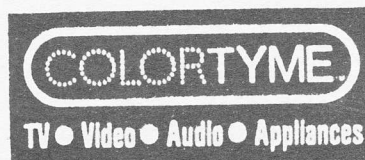


### Police/Security Equipment

- ★ Batons
- ★ Firearms
- ★ Ammunition
- ★ Tear Gas
- ★ Holsters
- ★ Protective Equipment

4115 JUDAH ST., SAN FRANCISCO, CA 94122 ★ (415) 664-7779

DAN HAWTHORNE

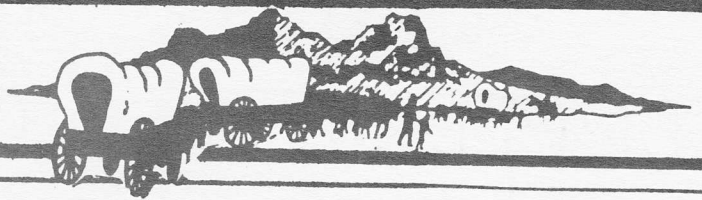


4799 Mission Street  
San Francisco, CA 94112  
(415) 333-1016

---

# TRAIL TIPS

---



Lew Reed

---

Trail development goes on but, as you know, government works ever so slowly so I can not report any new trails to explore at this moment.

The Bay Ridge Trail Committee meets regularly every month defining and redefining and inventorying the available trail system where a trail presently exists in place and describing the facilities that support such a trail. We are also working on filling in the missing links to have a completed route around the bay on the ridge tops within the next 5 years. Lew Reed serves on the San Mateo committee representing SMCHA, lending his trail expertise and knowledge of the existing trails to further the plan. Some others on the committee you might recognize are Frances Spangle and Jean Rusmore. (Have you picked up a copy of their new book on Peninsula Trails yet? It's out now...). Also on the committee is Betsy Crowder and representatives from the Trail Center, GGNRA, MPROSD, San Mateo County Parks, and executive staff of Bay Area Ridge Trail Council. It is a strong group, very knowledgeable and devoted. At the moment committee members are contacting the 20 town councils in San Mateo County to present a slide show and seek their endorsement of the project. Groups interested in trails are also being offered a chance to see the slide show and adoption of resolution of endorsement. SMCHA will receive their slide show probably at their first general meeting of 1989.

Working also on this great trail plan are planners of county and cities as a technical staff and GGNRA is following up with the San Francisco Water Department to solicit their permission for the trail to transverse their property on the ridges above Crystal Springs Lakes.

Harry Dean of San Mateo Parks reports that the ABAG committee is likewise working on the plan for the Bay Trail adjacent to the edge of the Bay for a hiking and biking trail.

Members of the San Mateo County Advisory Trails Committee are also working hard to complete their initial assignment of trail mapping San Mateo County. On a beautiful Saturday recently 14 members of the committee walked from the San Mateo Dam to the Water Temple mostly on Water Department land to inspect and make recommendations to extend the trail from the end of Sawyer Camp Road to 92 to the Water Temple as much off highway as possible. They found a seldom used paved service road west of 35 most of the way. Pending negotiations with the Water Department, this has the possibility of making a good trail connection all the way from Canada Road at Roberts Corners to above Millbrae. The Committee also walked Sheep Camp Road from Ralston Avenue in Belmont to the Water Temple in an effort to determine whether to include it within an overall County trail plan. Another walk from Edgewood Road to the Water Temple is planned for January. It looks like this trails committee will be in a position to make a report to the San Mateo Parks and Recreation Commission in late spring of 1989.

Santa Clara County Parks and Recreation Committee held a trails meeting on November 8th to discuss off road bikes in their county parks. Rick Payne attended as a representative of SMCHA and SM County Trails Advisory Committee. He reports that he was quite disappointed that there was little discussion of the potential and real conflicts between bike and other trail users. They had already designated trails and distributed maps of various parks showing the combined trails.



Monterey County forwarded me a copy of their trails plan for their North County. It listed categories of trails such as 1. hiking trails, 2. hiking and riding trails, 3. hiking and biking trails, 4. combined use trails, and 5. bike routes. They go on to describe hiking and riding trails as the narrow trails, hiking and biking trails as 8-10 foot paved trails and combined trails as trails that can safely accommodate multi users on trails with low gradients and sufficient clearances overhead. Bike routes were on roads and highways with shoulders. It is interesting to note that while their overall plans include many trails that there is only 1 hiking and riding trail in one park of approximately 4 miles in length. Compare, if you will, with San Mateo County where it has been alleged by some user groups that there are too many horse trails. We don't agree, do we?

Overheard at the SMCHA annual December party at Katie Kane's were stories of bike problems.

It was reported that several bikes came thru the Phleger property into Huddart Park on a Sunday in December. They were found on the Crystal Springs Trail by the rangers who cited the 5 bikers, loaded their bikes in their trucks and took the bikes outside the park and directed the bikers to walk out. It is reported that some were being cited for the third time. Fines are at \$50, \$100 and \$150 for the third offense. Then there was the story of bikes in Edgewood Park on a trail marked CLOSED and chained and marked NO BIKES and when challenged told the horseman

"F----You!". This incident is being reported to the Parks Department with a request

that the enforcement of the existing NO BIKE ordinance be enforced. It is most strongly urged that any one, whether in the park system as a hiker or rider report these encounters to the Park Department, Government Center, Redwood City relating time and place. It does not have to be an accident but a sighting of bikes on closed trails is the type of incident to be reported along with a recital of the exchange of remarks in the descriptive language most notable used. Such language is representative of the attitude of many bikers. Let management know!

---

It is most strongly urged that these encounters be reported to the Park Department, Government Center, Redwood City

---

The Woodside Trail Club is reporting an incident where a horsewoman was riding on a trail and became entangled in a wire being strung by the property owner. This was on a permissive trail. She sent the bills to the property owner. Turns out the Woodside Trail Club can find no record of her membership. Did she borrow a key? Was she just trespassing? At any rate, now the Woodside Trail Club is discussing the potential of changing the locks again at a cost of some \$3,000 plus, a cost which will probably will be passed on to the members. So, be cautioned, that if you are a member of the Trail Club, never loan your key. Again, there is also the possibility that the Trail Club might ask members to produce a liability insurance policy in order to get the new key. Are you properly insured? Ask your broker.

HORSEMAN MAGAZINE, September 1988 issue has a most excellent article entitled Terror on the Trail--Mountain Bikes and Horses do not mix. There are stories of incidents in Marin County and Mount Diablo. Heritage Trail Fund is also describing the problem of bikes in detail. The owner of an injured horse is presently suing the California Parks Department. Suits may lead to closing of trails to all users and not just bikes. Jurisdictions can not constantly defend themselves against these spurious suits.

Overheard at the SMCHA Board party were Harry Wellman and Lew Reed comparing notes on their participation in cattle drives. Harry had just returned from an 8 day trek

---

# TRAIL TIPS

---



continued...

---

in cold weather (14 degrees) at a point about 60 miles above Reno. It was his first experience. He enjoyed it but wonders if he will go again. Lew Reed is a veteran of some 25 drives from Bridgeport, Calif. to Smith Valley, Nevada.

Introduced at the same party was a new Board member, Bill Hopper of Bear Gulch Raod in Woodside. You will remember his fater, Bob Hopper, who was a former Board member and a most strong supporter of SMCHA when he operated a stable on the coast highway. Bob used to bring equipment to prepare the ring for horse shows and used to trailer his boarders over the hill to participate in our events. Bob now lives at Crows Landing.

Going off the Board was Cynthia Baird pleading just not enough time to attend meetings since she works nights many times as a libraian in South San Francisco. She was a former editor of this magazine. Said she would join in our activities as much as she can.

The Trial Center is preparing flyers on their next work day. It will be in Wunderlich Park with work on the Bear Gulch Trail. We will send the flyer out with our next announcement. Volunteers are what park jurisdictions operating with reduced funding rely upon to provide many hours of cost free trail building and repair. When you receive your flyer please volunteer (or send your strong backed young son or daughter...). Yes, women do volunteer and are acknowledged as willing workers accomplishing great things on the trails.

Funding is a big problem for San Mateo County Parks. Three rangers are due for retirement in January of 1989. Dave Christy is wondering about his chances of getting replacements allowed under his reduced budget.

Nancy Van Zwol obtained the many valuable books of pictures and stories put together by Historian Irma Goldsmith. She has turned them over to Rick Payne who is presently storing them. Any ideas for proper display or ultimate disposition? There are lots of great pictures of members and events and multiple stories of noted members, officers and events. Should they go the the San Mateo County Historical Society? Presently, they too are limited for space for exhibition. Any ideas?

Trail riding and trail rides slow down considerably at this time of year. However, we do have many sunny days and miles of all weather trails. Just because it rains on Thursday does not mean you can not ride on sunny Saturday. And, have you observed your horse? Where is he when it rains? Most likely standing out in the corral ignoring his nice dry stall. Most tack stores carry lots of rain gear. So let's do more all-weather trail riding. Keep yourself and your pal, your horse, in shape.

Just happened to look through some old San Mateo Horseman magazines for some ideas. There was an article on bikes in January 1985 relating 1984 bike problems on the trails. It tells us that it is an ongoing problem that is not yet solved.

TRAIL RIDING IS FUN. IT CAN BE ONE OF LIFE'S GREATEST PLEASURES. ENJOY!



# RAWHIDE 1988

Harry Wellman

The ad said "WANTED - EXPERIENCED RIDERS TO TAKE PART IN A 1865 TYPE CATTLE DRIVE. DON'T MISS THE CHANCE OF A LIFETIME!"

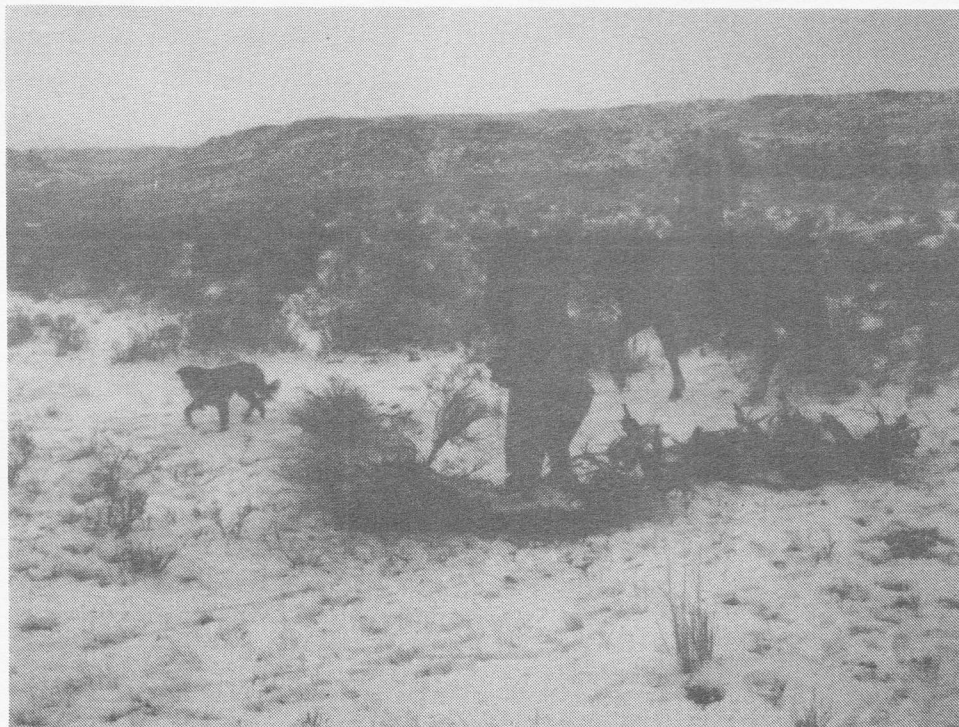
Well, it's not everyday you get the chance of a lifetime, so I called for more information. There would be about a thousand cows, a chuck wagon, sleeping under the stars and other good things. The ride was leaving in the middle of November from the Ravendale area of Northern California and ending up at Soldier's Meadows, Nevada. The drive was about 65 miles and crossed a 6,500 foot mountain pass. There might be a little snow.

The first day was a snap. We arrived at ranch headquarters, paid the fee, got fitted for a saddle and watched as the ranch hands tried to introduce the mules to the chuck wagon. After a couple of really fast trips around the arena and a downed fence, it was decided that the four-wheel drive Chevy Suburban might make a better chuck wagon! We were then loaded into vans and driven to the ranch where the doggies had been rounded up. There we met the other buckaroos, had dinner and went to bed early.

Day two started with an introduction to our faithful steeds and a lot of tack adjustment. We then went out to meet the cows. The cows were moving really well. Of course, they were following a hay wagon but once the hay wagon left, things slowed down a lot... In addition to the 12 dudes (6 men and 6 women), there were 10 wranglers, a cooking crew, and four television crews. Interestingly, three of the women "dudettes" were co-workers of past president Katie Kane's... The day ended with the safe arrival of our group at a dry lake bed about 12 miles from the start of the drive. The tents were already set up and dinner was on the fire. It didn't start snowing until the next day...

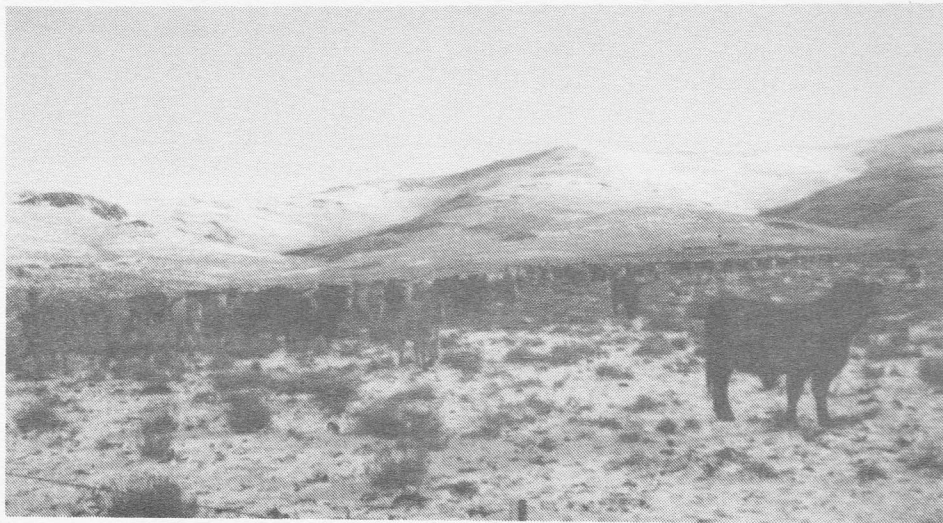
Day Three started with a giant delay. Two of the cows had calved during the night and arrangements had to be made to transport the mommas and infants in one of the stock trailers. Entertainment was provided during the wait by one of the guests who had been overly enthusiastic about tightening up his horses flank cinch until it became a bucking strap. Fortunately no one was injured. As we moved the herd, it became more overcast and the temperature dropped. A light snow started to fall as we reached the camp. We were all glad that sleeping under the stars had changed into sleeping in tents!

By now we began to understand just what the basic problem was, in cattle driving. The cows think all they have to do is stand around and eat grass. On occasion, they will take two or three steps before stopping for a new supply of grass, after which they must be screamed at, prodded, or bumped with your horse to get them to take



another couple of steps. This process kept going until lunch finally arrived. The snow had turned to a light rain as we started eating but about halfway through lunch, it started snowing in earnest. So the cattle were started and driven to the next camp. Seeing the tents was a pleasant sight even though the zippers were frozen shut!

The next day, the cattle were driven to an old ranch where they would be allowed to rest the next day. There are a lot of things that don't get mentioned in John Wayne movies, like days off for the cows because they are tired and their feet hurt. The dudes, being animal lovers, didn't complain about the cows' day off. Instead, we saddled up one of the suburbans and headed for Gerlach, Nevada (where the pavement ends and the the west begins...) for lunch and a shower.



The balance of the drive was pretty much the same. One of the outstanding memories was a UPS truck driving through the middle of the herd. The area was rugged and beautiful. We saw several groups of mustangs as well as flocks of migrating swans. The emigrant trail passes through this area and it is contantly amazing that the pioneers were able to get oxen and wagons through the desert.

A couple of friends have asked me if I would do it again. I would certainly like to ride the area, however at this point I would prefer to do it without the cows! If you think you might be interested in doing a trail drive, I would certainly recommend it. After all, it is the chance of a lifetime!

---

## PRESIDENTS RIDE

---

The ride honoring our current SMCHA president, Ron Harris and all the past presidents of SMCHA sported close to 50 riders and certainly was an awesome sight! Lots of new members joined in and the new Chinquapin Trail was ridden for the first time by many of us! Ron Harris led the ride and Rick Payne surprised everyone by hiding an ice chest at the top of Skyline for the break! Cold beer and sodas were handed out while Ron Harris was too polite to accept one, assuming that Rick only brought two or three... Eventually he caught on that there was enough for everyone and I bet that beer tasted great, didn't it?

Jill Silva and her crew of volunteers were waiting for us when we arrived at Trail Camp ready to serve lunch. Many more non-riders joined in and someone actually talked Ginger Reed into joining us! Seems as if she hasn't really EVER been on a ride and wanted to check out the lunch situation... For whatever reason, it was great to see her!

Rick Payne appeased a lot of 49er fans by providing a small color television set on the hood of his truck. Did those dents that Bruce and John put in the hood ever pop out?



# QUICK BITS

Doug Reed

Although physically bilateral, the workings of the horse's brain is not. What you have succeeded in teaching him to do on one side cannot be translated to the other and must be taught all over again.

Ever heard of a proprioceptive sense? Your horse has this thru a small portion of the inner ear which sends stimuli to the brain. This allows him to retain a picture of where he has placed each forefoot thus allowing him to know where to place the back ones even though he is unable to see them.

So that we all understand:

A stallion is a natural (unaltered) male horse.

A gelding is a castrated (altered) male horse.

A mare is a female horse age four and above.

A colt is a young male horse.

A filly is a young female horse.

A foal is a newborn horse of either sex.

Incidentally, horses are foaled or dropped, not "born" (a slip I still commonly make).

A sire is the father of a foal.

A dam is the mother of a foal.

A jack is a male ass (donkey).

A jenny is a female ass (donkey).

A mule is the offspring of a jack and a mare.

A hinny is the offspring of a stallion and a jenny.

So what is the offspring of a horse and a zebra called?

A zebrass! Confused?

Horses are not exempt from superstition. French folklore has it that black horses are unlucky. Several English and Welsh legends tell of the Devil appearing as a headless black horse. Not quite the notoriety achieved by the black cat!

Many horse form bonds with other animals but a rabbit and a race horse is the oddest couple I've heard of, yet!

Never train your horse to follow a routine only to do a reversal in order to trick him into another one. It's likely to be an experience he won't forget. The trust you worked so hard to build is not worth risking.

## PET WORLD

COMPLETE LINE OF  
PETS & SUPPLIES



BIRDS  
LARGE SELECTION  
EXOTIC BIRDS &  
PARROTS

SMALL & UNUSUAL ANIMALS  
REPTILES  
TROPICAL & MARINE FISH  
AQUARIUM SUPPLIES

DOG & CAT GROOMING  
LARGE SELECTION OF  
ASSORTED DOG & CAT FOODS

COMPARE  
OUR  
PRICES

OPEN  
DAILY: 10 AM TO 6 PM  
SUNDAYS 12 NOON TO 5 PM

583-7800

476 SAN MATEO AVE  
DOWNTOWN SAN BRUNO



**R. M. DIEZ**  
Farrier



Post Office Box 1768  
El Granada, CA 94018  
Home (415) 431-5480 Office (800) 544-8225

# SMCHA membership

This organization is formed for the purpose of sponsoring, cultivating and fostering an interest in fine horses and fine horsemanship in all types of horses throughout the State of California and in the County of San Mateo in particular; to give aid and support to every type of activity concerning horses; to sponsor any activity which will further the general purpose thereof, such as, but not limited to, horseshows and parades; to assist and encourage the acquisition, building, maintenance and supervision of bridle paths, horseback trails and the rights of way thereof, as well as accommodations for riders and horses thereon; and to do any and all things in furtherance of horsemen and horses.

Mary Ann Agosti  
Rosemarie Allen  
Caroline and Andrew Anderson  
William and Peggy Andreasen  
George and Barbara Andreini  
Stephanie Anise  
Steve Annus  
Toni Antonson  
Kati Aspley  
Rod and Libby Armanino  
Chris Armstrong  
Tom and Athena Arvetis  
Cynthia Baird  
Bruce Baker  
James and Diana Bargioni  
Alonzo Barnette  
Joel Bartlett  
Raymond and Joan Baumbach  
Grant Bennion  
Barbara Bergman  
Paul Bjoring  
Howard Boone  
Eileen Borzone  
Kim Borzone  
Susan and Jim Bosse  
Daria Bottini  
Gene Brenner  
Gil Brown  
Elise Browfield  
Kathy Bryan  
Robert and Katherine Bryan  
Suzanne Butler  
Pam Campbell  
Don and Pat Caraway  
Connie Cardinale  
John Cardinale  
Clementine Carroll  
Dorothy Carter  
Arlene and Larry Castro  
Dustin Castro  
Larry Castro  
Richard Chanbers  
Rose and Jonathan Clark  
Brandy Cocker  
Geni Colburn  
Christine Collins  
Donna Marie Colton  
Richard and Melissa Convery  
Patricia Cooley  
Shauna Corbin  
Angelo Costanzo  
Judy Coughlin

Nancy Crowley  
Carol Kay Curry  
Amos and Patty Dana  
Regina Davis  
Magdalena De Antoni  
James and Cathie Dearborn  
Greta Degraeve  
Richard DeLucchi  
Cynthia and Richard Deringer  
David Deringer  
Robert Desmond  
Lisa Dixon  
Susan Dorsey  
Mary Drew  
Laua Duato  
Sam Edelman  
Judy Edmunds  
Linda Ellery  
Donald Elvander  
Christine Eppstein  
Jim and Janet Estep  
Judith Etheridge  
Larry Faber  
Sarah Faught  
David Firenze  
Susan Flint  
Karen and Dan Flores  
Adeline Forrest  
Victoria Fought  
Richard Frankel  
Gustave Freeman  
Marie Freidel  
Judy Gage  
Carol Ann Gallon  
G Gasivoda  
Barbara George  
Virginia Gilmore  
Charles and Vera Goldsmith  
Carol Goosdtein  
Patrick Grady  
Sharon Greener  
Patrick Griffin  
Morris Grossman  
William Guinn  
Sharon Gunn  
Peter Haas  
Bill and Kathy Hackmann  
Charles and Kitty Haddix  
Harry Haeussler  
Sandy Hall  
Marsha Jo Hannah  
Gary and Charlene Harris

Ron and Mary Jo Harris  
Tom Harris  
Peggy Harrison  
Pamela Haylock  
Paul Heieck  
Michael and Andrea Hertert  
David and Pam Hildebrandt  
Sharon Himebrook  
Carroll Ann Hodges  
Edward Hoffacker  
Bill and Kay Holmes  
Bob and Dora Hopper  
Michelle Hopper  
Bill and Janis Hopper  
Janet Houghton  
Fay Humphries  
Phelps Hunter  
Bob and Mary Hydorn  
Lorian Ink  
Carole Isidoro  
William and Fran Jabs  
Maegan Jacobs  
Ulla Jaeger  
Hans Jekat  
Gordon and Dorothy Jennings  
Gregory Johnson  
Jennifer Johnson  
Jonathan Jones  
Joan Lindecker  
Rick Jones  
Clay Judd  
Katie Kane  
Ms. Kaufman  
Denneth Deddington  
Mervyn and Betty Keegan  
Valerie Kieser  
Sharon Killingsworth  
Walter Kirk  
Joe and Christine Kirley  
Valerie Klingele  
Dee Dee Kramer  
Robert Krensky  
Cheryl Kreuzer  
Gene Kronberg  
Edith kuhn  
Alexandra Lane  
Katherine Lane  
Ken Lnsdowne  
Doris Lantz  
Peter and Marth Lantz  
Fran Law  
David and Trudy Lawrence



George and Wendy Lee  
 Suzanne Lee  
 Sandy Lees  
 John and Leone Leslie  
 Betty and Dean Liechty  
 C. S. Liston  
 Joan Loftin  
 Los Altos Trail Club  
 Arthur and Barbara MacDonald  
 Don Macintosh  
 John and Hildegarde Mackay  
 William and Margaret MacPhee  
 Jud Mak  
 Bill and Gay-Lynne Mann  
 Roy Markegard  
 Debra Mattmann  
 Heather McAvoy  
 Bruce Krempetz  
 Gene McDonald  
 Shelley McDonaugh  
 Steve McGuire  
 Kelly McKae  
 Joan McLaren  
 Jean McLaughlin  
 Keith and Judy McLeod  
 Nancy Mendell  
 Ross and Ruth Meredith  
 Sharon Milanese  
 Thomas Miller  
 Marcia Miller-Dowdy  
 Joaquin and Gail De Monet  
 Doug and Noel Moody  
 David Moore  
 Julie Morin  
 Terry Moy  
 Dorothy Myers  
 Wendy Myers  
 Lore Namvarrow  
 Dorothea Nell  
 John Olivier  
 C. W. Olmo  
 Stuart Olson  
 Patricia Padilla  
 Donald Palus  
 Carol Parker  
 Steve Park  
 Michelle Payne  
 Rick Payne  
 Suzannne Perada  
 Kristen Peter  
 Robert and Margaret Peter  
 Robert John Peter

Jester Peterson  
 Barbara Petrov  
 Cliff Pierce  
 Susan Pokart  
 Rene and Lucie Pozo  
 Donald and Sandra Pugh  
 Phil Ray  
 Ginger and Doug Reed  
 Lewis Reed  
 David and Margaret Reese  
 Steven and Kandace Reeves  
 Dorothy Regan  
 Jeanette Rettig  
 Carolyn Rice  
 Jimmie and Josephine Roberts  
 Carol and James Robertson  
 Wendy Robertson  
 Linda Robinson  
 Virginia Robinson  
 Delia Romero  
 Harry Rongey  
 E. N/ Rowan  
 Karen Rowley  
 Dale and Beverly Ryman  
 Laura Sandberg  
 Santa Cruz County Horsemen's  
 Association  
 Sam Sauerbry  
 Garda Schlesinger  
 Stanley Schlichting  
 Albert Schreck  
 Tommy Self  
 William and Barbara Sereni  
 Tanya Servaas  
 George Shawback  
 Sue Sheehan  
 Gina Silva  
 Jill Silva  
 Jane Simonsen  
 Jay and Barbara Smith  
 Thomas and Leila Smith  
 Sonya Sokolow  
 Jim and Carol Stanaway  
 Hal Steinberger  
 David and Carole Sternberg  
 Paul and Jodi Storaasli  
 Nan Strom  
 Robert Stucky  
 Mike and Mary Beth Sullivan  
 Carol Anne Sweeney  
 W.A. Swinerton  
 Dale Switzer

Carol Tague  
 Dev terrill  
 Carol Tether  
 Kristy Tetzlaff  
 Kit Tobin  
 Ken Torre  
 Candice Torresdal  
 K.B. Towne  
 Bruce Doran  
 Donna Tozi  
 Diane Turken  
 Bill and Roni Turnbow  
 John Twisselman  
 Marv and Mary Lee Twisselman  
 Sandra Tyrholm  
 Samuel Untermyer  
 Nancy Van Zwol  
 Marian Vanden Bosch  
 Linda Vanloan  
 Nelio and Lillian Vannucci  
 Georgette and M.B. Victor  
 Alan and Mary Walden  
 Linda Ward  
 Dana Angle  
 Pam Warren-Ruggieri  
 Dean Watkins  
 Judith Watkins  
 Harry Wellman  
 Maryclaire Wellman  
 Sue Wellwood

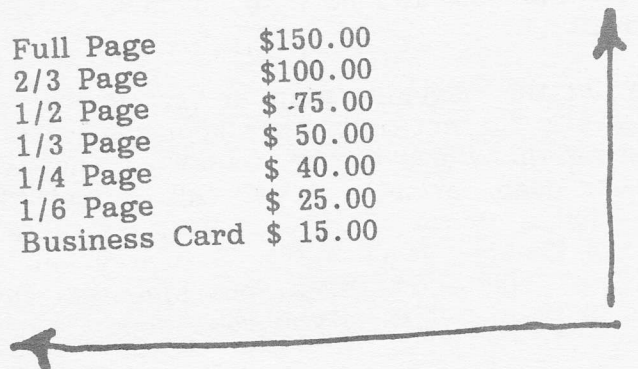
January 14<sup>th</sup>  
 Installation  
 Dinner

RSVP: by January 6<sup>th</sup>  
 or Melissa Converg. 851-2911  
 or Ron Harris: 365-0704

# AN INVITATION

We invite you to grow with this magazine by promoting your service or product through paid advertisement. Word of quality products travels quickly in a friendly organization such as this one. If you are intereted in advertising, please send a camera ready copy of your ad and your check to San Mateo County Horesman's Association C/O Doris Lantz 559 Rocky Way, Woodside, CA 94062. Home phone is 415-366-5475 or Work 415-583-7800 for any questions you may have concerning our publication.

Full Page	\$150.00
2/3 Page	\$100.00
1/2 Page	\$ 75.00
1/3 Page	\$ 50.00
1/4 Page	\$ 40.00
1/6 Page	\$ 25.00
Business Card	\$ 15.00



---

## Spotlight on our sponsors...

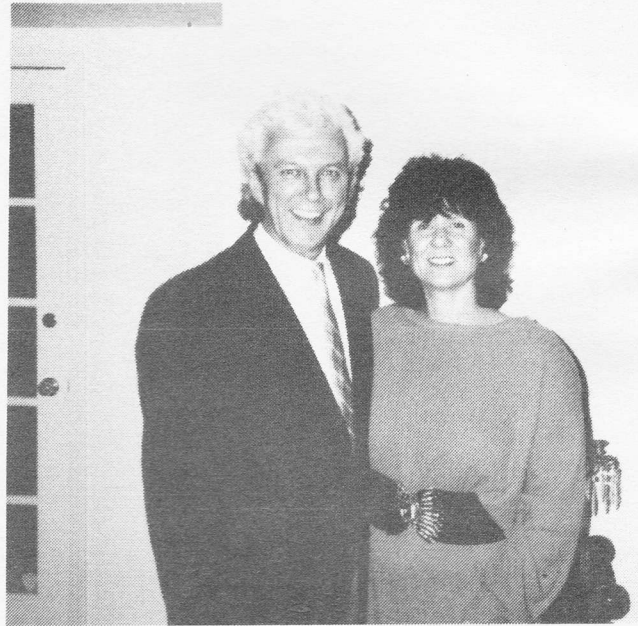
---

---

### ATHENA and TOM ARVETIS

---

This issue our Spotlight on Sponsors is featuring a couple (well known to many of you) who are both members of the San Mateo Horsemen's Association as well as sponsors of our magazine. They are long time Woodside residents, Athena and Tom Arvetis. Athena, a former school teacher educated in New York, is an agent for the Grubb & Ellis Company, Residential Properties Division located at 2930 Woodside Road, Woodside Tel. No. 415-851-1589 (office) and 415-851-0882 (residence). Tom, originally from Chicago, is an agent for State Farm Insurance operating from his office of nine years at 102 S. El Camino, San Mateo Tel. No. 415-342-8857 (office) and 415-851-0882 (residence).



With sixteen years of experience in the Real Estate industry, Athena has handled most of the homes in Woodside and its surrounding areas. While handling anything from cottages to mansions, she specializes in horse properties. Athena was featured in the June 18th edition of the Times-Tribune, Real Estate section this year. The articles discussed the increasing values of property in Woodside and the effects which they are having on the horse community. A subject that involves Athena not only on a business level but as a community member, as well.

Located across the street from Mills Hospital in San Mateo, Tom has served the insurance needs of Bay Area residents for many years. As we are all aware, with the acceptance of Proposition 103, many things are "up in the air" in the insurance industry. In view of this, Tom had some very good advise. He suggests that if you have any questions involving any of your coverages that you contact your agent or broker. He, also, suggests that you ask to be updated on your coverages. It will be time well spent.

Although not riding much currently, due to many committments, the couple has spent many years "in the saddle" while raising their four children in Woodside. Now that they have grown (two boys at Serra High School and two girls at Chico State), Tom and Athena are pursuing their individual careers as well as a variety of other interests. They continue to remain involved with the community and its organizations and hope to be back in the saddle again. We hope to see them on the trails, too.

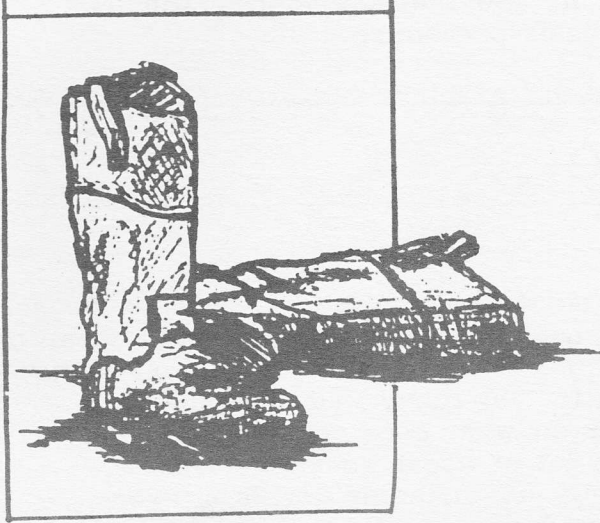
We at the magazine wish to extend our thanks and appreciation to Tom and Athena Arvetis for not only their sponsorship but their time and extra effort in helping us bring this piece to our readers. They are two very nice people and we hope that as your needs arise, you will call or visit them. Athena, at Grubb & Ellis, is always available, home or office. Tom, at State Farm Insurance, has office hours Monday thru Friday, 9: 00-5:30. Saturday and evening appointments are available. Once again, Tom and Athena, our sincerest thanks! And to our readers, when you do stop in or call, tell them you read about them in the San Mateo Horseman.



# CLEM'S

# ORNER

Clementine Carroll



Can't seem to find much news to share with you this time, therefore shall delve into my "horse file". The following is an article entitled When should you call the Vet? by Don Blazer of the Copley News Service.

When I was feeling a little sick, or ran a little temperature, or had a touch of the well-know "Pip", my mom would put me to bed and give me a little chicken soup. Chicken soup of course, cured everything!

But there's no such miracle cure for horses.

Rest, good food and fresh water, plus a tincture of time is the basic cure for horse ailments. When the problem requires greater medical skill, call the veterinarian.

How do you know when to call the hoss doctor? By reading the horse's vital signs... temperature, respiration and pulse.

As you get to know your horse well, you'll recognize immediately when he isn't feeling up to par. That's the time to get out the thermometer.

The normal temperature for a horse is 99 to 100 degrees. A temperature of 101 is common in young foals.

A horse with a temperature of 105 or 106 is usually a very sick horse.

To check the horse's temperature, shake the thermometer to get the mercury down, then

lubricate the thermometer and insert it full length into the horse's rectum. Before inserting, it is a very good idea to attach a length of string to the top of the thermometer. Hang on to the string and the thermometer won't be lost.

The thermometer should be left in for at least three minutes.

The respiration rate is the number of times a horse inhales and exhales each minute. The average rate for a horse at rest is 16. But, that is an average, and may not be normal for your horse. Check the respiration over a three and four day period to find a normal, at rest, rate for your horse.

The best way to determine respiration is to place your hand on the side of the rib cage and count the number of breaths taken as you time the second hand of your watch for one minute. Another way is to stand back and watch the in and out motion of the rib cage, or the opening and closing of the nostrils which are counted in the same manner.

If the horse has just been worked, or is excited, the respiration rate can climb to 30 or 40 and still be normal. The rate you want to know is the "at rest" rate.

The pulse rate, at rest, is normally just a little more than double the respiration rate. So, a horse with a 16 respiration, would have about a 36 pulse. As with the respiration rate, the pulse will increase with stress or exercise.

The pulse is the throb or surge of force in the artery as the heart pumps blood through the body.

The easiest location to find the pulse is usually the artery which runs along the inner side of the horse's jaw.

Other convenient locations are at the back of the fetlock joint and the inside of the elbow.

It's a good idea to practice taking you horse's vital signs. First the practice will help you to read the signs more easily, and secondly, you will establish a "normal" for your horse.

Take the vital signs at different times of the day and over a three or four day period. Be sure to write down the results each time. You'll find the signs are slightly different

under different circumstances, but they will always fall in a three or four point range.

The next time your horse "doesn't look right" you can take his vitals. If he's in the normal range, maybe all he needs is a little of the "chicken soup doctoring".

But, if he's not normal, he'll need a veterinarian, and the veterinarian will be happy to know you've already started the diagnosis procedure.

---

---

## THEY'RE OFF and RUNNING...

---

Richard Convery

Well, those who ran off to the General Meeting on November 16th at Woodside School sure learned a lot about horse racing! Arthur Lobato, a retired jockey (courtesy of Bay Meadows Race Track) gave a hilarious and informative lecture on horse racing from his point of view. The 52 members who attended really had a good time listening to all of his "behind the scene" stories on what goes on at a race track before, during and after a race. There were a lot of great questions from the members which made the evening more interesting just listening to his answers. There will be 52 members lined up at the pay window at next year's Night at the Races for having attended Art's lecture. Twelve coffee cups from the Overnight Ride were given away for door prizes, along with two bottles of vintage wine (1988). Thanks to the efforts of Bob Hydord, we all pigged out on Ice Cream Sundaes with all the trimmings after the meeting. We still have quite a bit of Ice Cream left, so we better come up with an excuse for a meeting before it melts.

So ends the General Meetings for 1988 and on to 1989 where we have some exciting programs already planned. My thanks to all who attended and I'll see you next year!

**Paul Bjoring**

P.O. Box 620174 • Woodside, CA 94062

(415) 364-1153

Corrals Reconditioned ★ Fences Built/Repaired

Blue Rock ★ Sand ★ Gravel

Trash/Debris Removal

Tractor Work

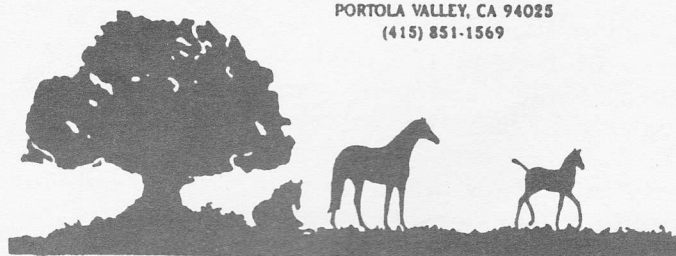
5-Yd. Dump Truck ★ 1-Ton Flatbed

Reasonable Rates ★ Quality Service

DANIEL SWEET, D.V.M.

**Briarwood Equine Clinic, Inc.**

884 PORTOLA ROAD  
PORTOLA VALLEY, CA 94025  
(415) 851-1569



**C&C**

CORNISH & CAREY REAL ESTATE



**Sam Sauerbry**



2969 Woodside Road / Woodside, CA 94062

Bus: (415) 851-1940

Res: (415) 851-4043

AUTOWEST IMPORTS  
20235 STEVENS CREEK BLVD.  
CUPERTINO, CA 95014

**DENNIS JONES**  
(408) 253-5580

SPECIALIZING IN MERCEDES BENZ



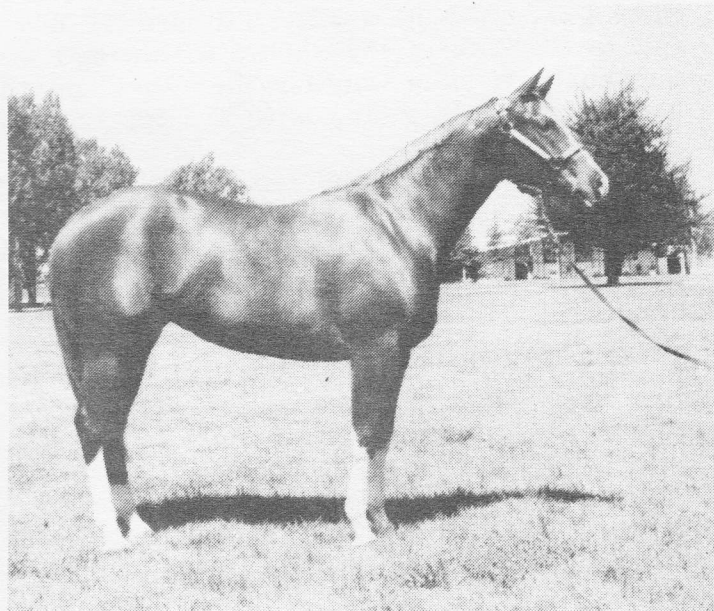
Did you guess?

## THE NAME OF THE MYSTERY HORSE

Here is the identity of the Mystery Horse, HOT ELEGANCE or "Elly" for short. Elly first appeared in the San Mateo Horseman in the summer of 1986. At that time, Elly's "family" Paint Champion, HOT DILEMMA (better known as "Sugar") and owner Sandy Hunter were a common sight in Woodside and at Wika Ranch where Sandy had boarded Sugar for many years. As many of you already know, Sandy established her own tack business and has since moved to Roseville, CA. There, she has set up her own ranch (the likes of which make many of us green with envy). Needless to say both Elly and Sugar are doing great in their new home with their many ranch friends which now include dogs, cats, goat, and sheep.

Sandy has started campaigning Elly and she has done quite well for herself. Both Sugar and her first Paint baby (HOT RUMORS - a colt) have attained championship status. HOT RUMORS, in 1985 was California Trail Champ as well as third in the nation. With this type of "family", I have no doubt we will be hearing more about Elly as time goes on.

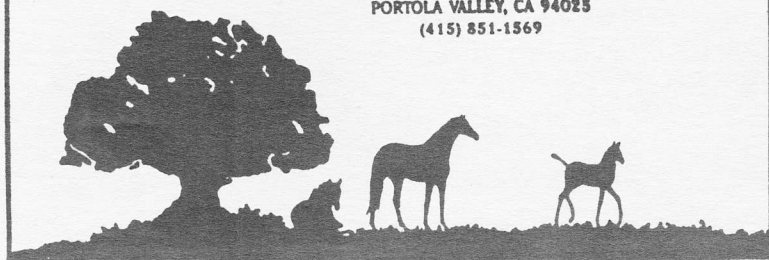
Editors Note: If anyone knows of any "Where are They Now" stories, we would love to hear from you. Please send any items to the San Mateo Horseman c/o this magazine.



MICHAEL VAN NOY, D.V.M.

**Briarwood Equine Clinic, Inc.**

884 PORTOLA ROAD  
PORTOLA VALLEY, CA 94025  
(415) 851-1569



**ED COHN'S TRAINING STABLE**

**Cutting • Snaffle Bit  
Reining • Roping • Colts Started**

874 Runnymede Road  
Woodside, CA 94062  
(415) 851-0456



---

## NEW BOARD MEMBERS

---

Introducing our new board members...

Five new board members were elected to the Board of Directors at the general meeting held on November 16, 1988. The board member position is a three year term and requires a strong committment to the SMCHA. Our new board members are:

**JILL SILVA:** Jill has been a board member before and was asked to come back on the board again this year. She must have missed all the work! She's best known as the "cook of the year..." having done all the planning and preparing the meals for the Overnight Ride at Jack Brook Horse Camp and organized her crew for the lunch at the President's Ride in Huddart Park. I'm sure her board duties will keep her busier than just cooking this year!

**CHERYL FIKE:** Cheryl has a strong background in riding, training and breeding Arabians and owns Sandstone Arabians. Having just moved to Redwood City from Los Altos, she's anxious to share her knowledge and expertise with other SMCHA members. She has been quite active in the Los Altos Horseman's Association for many years and is looking forward to helping with our horse shows this year!

**NANCY CROWLEY:** Nancy has been riding for years and moved her horse BUDDY over to Woodside from the coast so that she could enjoy our local trails! She's expecting their first child next July but already has plans to ride up until the baby's born and to be back in the saddle within two weeks even if she has to bring the baby... Her husband Mike would rather "bet" on the horses, rather than ride them so Nancy's usually seen out riding with friends in Huddart Park!

**JOHN CARDINALE:** John is fairly new to horses and riding and the SMCHA but has been a strong supporter at many of our events this past year. His horse is probably more well known than he is but that should change this next year! Haven't got a committment from him yet for any parades but his horse, ROBBIE will be there for sure!

**BILL HOPPER:** Bill and his family have been to every one of SMCHA events this past year and daughter Michelle had some nice showings at the horse shows and horse clinics. With that much support to the association, how could the board go wrong with inviting him to join them! His father, Bob Hopper was a long-time board member and many of the SMCHA members remember him well. Apparently he took great interest in trailering the boarders at his stable to many of the SMCHA events! We're not intending Bill to do any trailering, but if we asked, I'm sure he would!

---

Being a board member requires a lot of time and effort and a strong committment throughout the year, making sure that all the SMCHA events are well-coordinated and staffed. The people that volunteer do so because they enjoy the excitement and fun that usually follows most of our events. If you should have any questions regarding any of our programs, please feel free to ask any of the board members and if they don't know the answer, they'll find out for you! If you are interested in helping with any of our events, please feel free to join in!

---





John Cardinale and ROBBIE.



Nancy Crowley and BUDDY

**SAN CARLOS  
WATERBEDS  
AND MATTRESSES**

THE ULTIMATE IN COMFORT TECHNOLOGY

LARGEST SELECTION • LOWEST PRICES

184 El Camino Real  
So. San Francisco, CA 94080  
Phone (415) 583-2221

Kim A. Bentley



**TWISSELMAN  
ELECTRIC INC.**  
[415] 369-1055

Marv Twisselman

P.O. Box 620231  
Woodside, CA 94062  
Cal. Lic. 445299

**Daly City**

**Carlos Hernandez**  
General Manager

**HONDA**

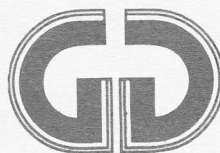
**THE MOTORCYCLE SUPERSTORE**

**YAMAHA**

6232 Mission St.  
Top of the Hill—Daly City **(415) 756-8590**

Specializing in ATV'S and 4 Wheelers

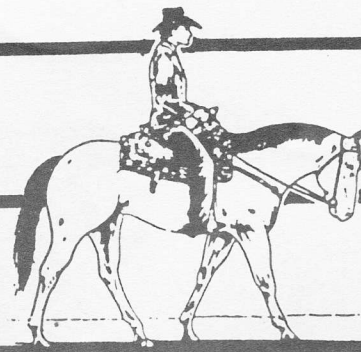
**GOLDEN GATE PRESS**  
Printers and Stationers



**RICHARD CONVERY**

575 San Mateo Avenue  
San Bruno, CA 94066  
(415) 588-4065

# VOLUNTEER HORSE PATROL



STEPHANIE ANISE



In just two short years, 74 equestrians have joined the volunteer horse patrol. A fair number of the volunteers also belong to SMCHA, so don't be too surprised when you see your friends patrolling in Huddart, Edgewood or Wunderlich parks.

Next spring there will be new trail signs at Huddart Park. David Moore, Huddart Park Supervisor, is looking forward to getting input from you, the trail users, during the planning stages... the sooner the better. Everyone's comments are valuable, from the person

who is just getting acquainted with Huddart to the oldtimer who knows the park inside and out. He would like you to drop him a note with your ideas and comments at the following address:

David Moore  
Parks and Recreation Division  
590 Hamilton  
Redwood City, CA 94061

Until the volunteers started using the horse trailer parking lot at Huddart, that great big area was empty most of the time. Now that we're really using it, the trailer parking facility at Huddart Park is going to be improved this winter to include: water, tie racks or posts, dirt areas for unloading and a picnic bench. Thank you, Ranger Moore.

'88 was a busy year not only for the Huddart parking lot, but also for the volunteers: pot luck meeting, representing San Mateo County Parks in the Fourth of July parade, overnight at Jack Brook Horse Camp, fall barbeque, and interpretive session at Huddart Park with park service naturalists, Bob Breen and Carol Kemnitz.

Tuesday, November 22, 1988 was a very special day for us. The Board of Supervisors of San Mateo County presented the San Mateo County Horse Patrol (also known as the "County Mounties") with a resolution honoring and commending our members for our "community involvement and value to San Mateo County". Participating in the presentation were:



Stephanie Anise  
 Cynthia Baird  
 Ralph Elliot  
 Tom Gentry  
 Pat Holmes  
 Marcia Keener  
 Karen Kirshner

Lisa Schumacher  
 Tommy Self  
 Sonya Sokolow  
 Harriet Tucker  
 Marian Vandebosch  
 Carleen Whittelsey  
 Hazel Wuerschling

Our rooting section included David Christy (Director, Parks and Recreation), Robert Emert (Supervisor, County Parks), David Moore (Supervisor, Huddart Park) and my mom. Yeah mounties!

For additional information about the Volunteer Horse Patrol, please call me evenings or weekends at 415-364-6614. To receive an information packet from the Parks and Recreation Division, call 415-363-4020. Here's a sneak preview at our 1989 orientation schedule for new volunteers:

Tuesday, April 18  
 Wednesday, June 21  
 Thursday, August 24

---

## ARE YOU A MEMBER?

---



SAN MATEO COUNTY HORSEMEN'S ASSOCIATION

1988 APPLICATION FOR MEMBERSHIP

MEMBERSHIP TYPE  
 (Please indicate  
 number of each)

Annual Dues

<input type="checkbox"/> JUNIOR MEMBER	\$10.00
<input type="checkbox"/> SENIOR MEMBER	\$20.00
<input type="checkbox"/> MR/MRS MEMBER	\$30.00

TOTAL AMOUNT ENCLOSED \_\_\_\_\_

NAME \_\_\_\_\_

ADDRESS \_\_\_\_\_

CITY \_\_\_\_\_ STATE \_\_\_\_\_ ZIP \_\_\_\_\_

TELEPHONE \_\_\_\_\_

Please check activities of  
 which you have a special  
 interest in:

WESTERN RIDING CLINICS  
 ENGLISH HORSE SHOWS  
 WESTERN HORSE SHOWS  
 MAGAZINE  
 TRAIL RIDES  
 ENGLISH RIDING CLINICS  
 PLAYDAYS  
 PUBLICITY/MAILINGS  
 OTHER \_\_\_\_\_

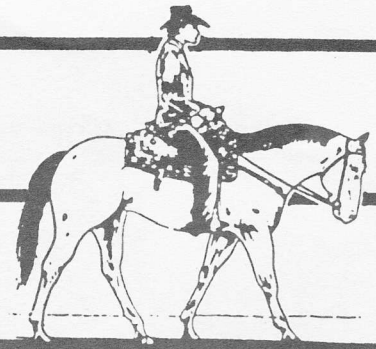
Please Mail Application to: SMCHA PO BOX 620092, Woodside, Calif 94062

---

---

# VOLUNTEER HORSE PATROL

---



STEPHANIE ANISE



In just two short years, 74 equestrians have joined the volunteer horse patrol. A fair number of the volunteers also belong to SMCHA, so don't be too surprised when you see your friends patrolling in Huddart, Edgewood or Wunderlich parks.

Next spring there will be new trail signs at Huddart Park. David Moore, Huddart Park Supervisor, is looking forward to getting input from you, the trail users, during the planning stages... the sooner the better. Everyone's comments are valuable, from the person

who is just getting acquainted with Huddart to the oldtimer who knows the park inside and out. He would like you to drop him a note with your ideas and comments at the following address:

David Moore  
Parks and Recreation Division  
590 Hamilton  
Redwood City, CA 94061

Until the volunteers started using the horse trailer parking lot at Huddart, that great big area was empty most of the time. Now that we're really using it, the trailer parking facility at Huddart Park is going to be improved this winter to include: water, tie racks or posts, dirt areas for unloading and a picnic bench. Thank you, Ranger Moore.

'88 was a busy year not only for the Huddart parking lot, but also for the volunteers: pot luck meeting, representing San Mateo County Parks in the Fourth of July parade, overnight at Jack Brook Horse Camp, fall barbeque, and interpretive session at Huddart Park with park service naturalists, Bob Breen and Carol Kemnitz.

Tuesday, November 22, 1988 was a very special day for us. The Board of Supervisors of San Mateo County presented the San Mateo County Horse Patrol (also known as the "County Mounties") with a resolution honoring and commending our members for our "community involvement and value to San Mateo County". Participating in the presentation were:



Stephanie Anise  
Cynthia Baird  
Ralph Elliot  
Tom Gentry  
Pat Holmes  
Marcia Keener  
Karen Kirshner

Lisa Schumacher  
Tommy Self  
Sonya Sokolow  
Harriet Tucker  
Marian Vandebosch  
Carleen Whittelsey  
Hazel Wuersching

Our rooting section included David Christy (Director, Parks and Recreation), Robert Emert (Supervisor, County Parks), David Moore (Supervisor, Huddart Park) and my mom. Yeah mounties!

For additional information about the Volunteer Horse Patrol, please call me evenings or weekends at 415-364-6614. To receive an information packet from the Parks and Recreation Division, call 415-363-4020. Here's a sneak preview at our 1989 orientation schedule for new volunteers:

Tuesday, April 18  
Wednesday, June 21  
Thursday, August 24



## ARE YOU A MEMBER?

SAN MATEO COUNTY HORSEMEN'S ASSOCIATION

1988 APPLICATION FOR MEMBERSHIP

### MEMBERSHIP TYPE

(Please indicate  
number of each)

### Annual Dues

<input type="checkbox"/> JUNIOR MEMBER	\$10.00
<input type="checkbox"/> SENIOR MEMBER	\$20.00
<input type="checkbox"/> MR/MRS MEMBER	\$30.00

TOTAL AMOUNT ENCLOSED \_\_\_\_\_

NAME \_\_\_\_\_

ADDRESS \_\_\_\_\_

CITY \_\_\_\_\_ STATE \_\_\_\_\_ ZIP \_\_\_\_\_

TELEPHONE \_\_\_\_\_

Please check activities of  
which you have a special  
interest in:

<input type="checkbox"/>	WESTERN RIDING CLINICS
<input type="checkbox"/>	ENGLISH HORSE SHOWS
<input type="checkbox"/>	WESTERN HORSE SHOWS
<input type="checkbox"/>	MAGAZINE
<input type="checkbox"/>	TRAIL RIDES
<input type="checkbox"/>	ENGLISH RIDING CLINICS
<input type="checkbox"/>	PLAYDAYS
<input type="checkbox"/>	PUBLICITY/MAILINGS
<input type="checkbox"/>	OTHER _____

Please Mail Application to: SMCHA PO BOX 620092, Woodside, Calif 94062

---

# EAGLES and BALD EAGLES

---

*Submitted by Barry Wellman*



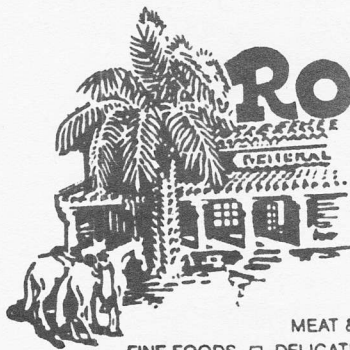
## EAGLES

This is the time of year that eagles can be seen in Northern California.

If you see a really large hawk-like bird (like a red tail hawk with a glaucous condition...) that is not a buzzard, there is a good possibility that it is a golden eagle. It is fairly easy to recognize the immature goldens due to a large white band on their tails. A group of three goldens have been seen recently at Webb Ranch and also near the Stanford Accelerator.

## BALD EAGLES

There is an ever increasing flock of bald eagles that winter at Lake San Antonio near Paso Robles. The Monterey County Parks System runs boat tours to watch the eagles between December and March of each year. If you have never seen a wild bald eagle, this is an excellent way to do it. There is even a special brunch boat tour on Sundays where you get breakfast, champagne and a good look at the eagles. For more information, call 408-755-4899.



**ROBERTS**  
A TOWN MARKET PLACE

3015 WOODSIDE ROAD  
WOODSIDE, CA. 94062  
415-851-1511

MEAT & PRODUCE  WINE & LIQUOR  
FINE FOODS  DELICATESSEN  HARDWARE & GRAIN

## Grubb & Ellis

Athena Arvetis



Grubb & Ellis Company  
Residential Properties  
Division

2930 Woodside Road  
Woodside, California 94062  
Office (415) 851-1589  
Residence (415) 851-0882





Kessler's Chiropractic  
& Sports Injury Center

Dr. Michael Kessler D.C., C.C.S.P.

638 San Mateo Ave. • San Bruno, CA 94066 • 415/873-4430



STATE FARM INSURANCE COMPANIES  
HOME OFFICE - BLOOMINGTON, ILLINOIS

**TOM ARVETIS**

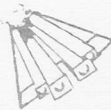
AUTO - FIRE - LIFE - HEALTH

102 S. EL CAMINO  
SAN MATEO CA 94401

Bus. 342-8857  
RES. 851-0882

**STARSHIP MOVIE CO.**

3046 Woodside Rd.  
Woodside, CA 94062



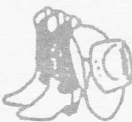
MOVIE RENTAL and SALES  
VCR RENTAL and SALES

851-8760

Donna & Glenn McCollum

**WINCHESTER  
WESTERN WEAR**

English Tack and Apparel



920 Abbott St.  
Salinas, CA 93901  
(408) 422-9991

3291 Stevens Creek Blvd.  
San Jose, CA 95117  
(408) 244-9191/9192

*Thank you*

Special thanks to the guys at...

*Holladay*

**OFFICE MACHINES, Inc.**

SALES • RENTALS • REPAIRS

1275 MISSION ST., SAN FRANCISCO, CALIF. 94103  
PHONE 626-6344

When the printer goes down and the magazine has to be at the printers by noon the next day, you appreciate all the help you can get. How was the Christmas party?



**THE FRANCISCAN FORGE INTERIORS**

3295 EL CAMINO REAL • ATHERTON • CALIFORNIA 94025

Distinctive furnishings  
arranged in a relaxed setting  
that makes shopping  
or browsing a real delight

There are many decorating ideas to please horsemen.

369-5285

*Precision Engravers, Inc.*

1553 LAUREL ST. - SAN CARLOS, CA 94070 - (415) 591-4453

STALL SIGNS  
HALTER PLATES  
SADDLE PLATES  
CHAP TAGS  
STABLE SIGNS

BRASS - CHROME - WOOD - PLASTIC

CUSTOM WORK OUR SPECIALTY

"If you can sketch it, we can make it!"

SAN MATEO COUNTY HORSEMEN'S ASSOCIATION  
PO BOX 620092, Woodside, California 94062  
Address Correction Requested  
Forwarding and Return Postage Guaranteed

BULK RATE  
U.S. POSTAGE PAID  
Redwood City P.O.  
Permit No. 12

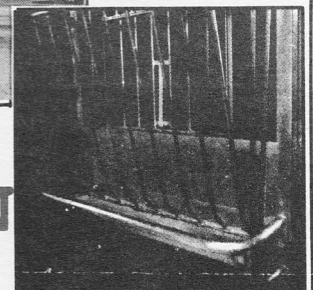
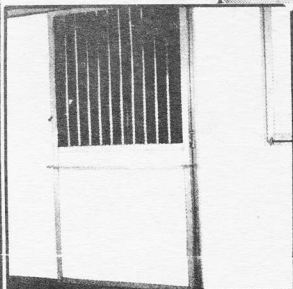
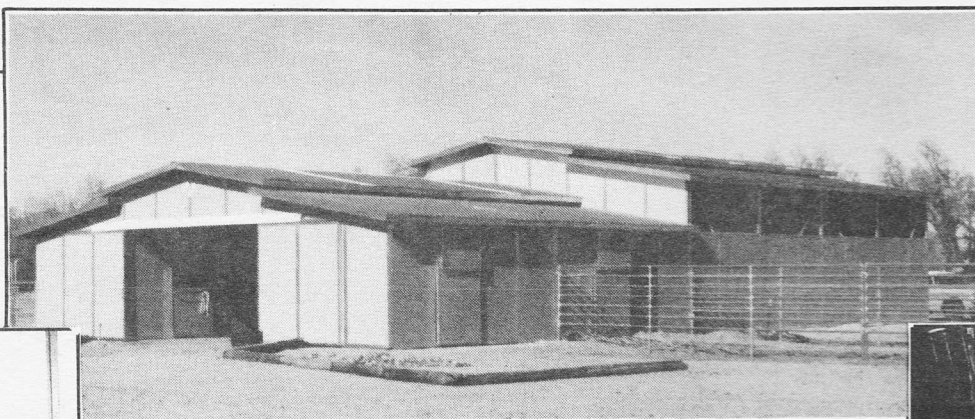
Published by: SAN MATEO COUNTY HORSEMEN'S ASSOCIATION

A Non-Profit Organization  
Member of the California State Horsemen's Association

President: Rick Payne  
Editors: Doug Reed and Libby Armanino

Volume 48 NO. 1 WINTER 1989

1199 S 1288  
BARBARA PETROV  
12422 SKYLINE  
WOODSIDE CA 94062



## MAVERICK: THE AFFORDABLE SHOW BARN

### Maverick Barn Systems

2266 Railroad Avenue  
Livermore, California 94550  
Call collect: (415) 447-3721  
Dealer Inquiries Invited



**Safety as well as beauty  
is built into every Maverick barn!**

Options are available in roof designs, stall fronts and configurations to complement the needs of the small horse owner as well as the professional trainer.

**Maverick has authorized dealers throughout the West. For more information and the dealer nearest you, call us today.**